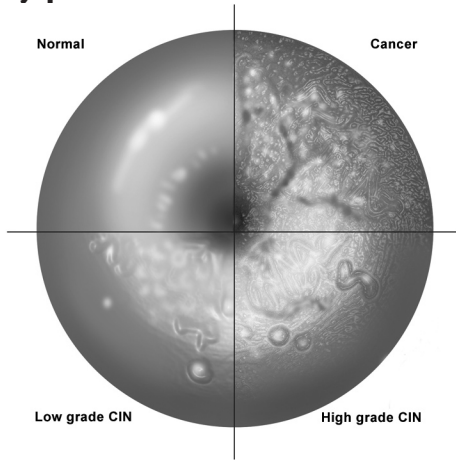


58260, 58290

CPT® Codes

- 58260** Vaginal hysterectomy, for uterus 250 g or less;
58290 Vaginal hysterectomy, for uterus greater than 250 g;

Cervical dysplasia



© 2008 Fairman Studios, LLC. All Rights Reserved.

CPT® Coding Tips

CPT 2003 added the 250 gram weight distinction to 58260 and created code 58290 for uteri greater than 250 grams. See code 58150 for abdominal hysterectomies.

ICD-9-CM Codes

- 180.0** Malignant neoplasm of; endocervix
180.1 exocervix
181 placenta
182.0 corpus uteri, except isthmus
182.1 isthmus
182.8 other specified sites of body of uterus
183.0 ovary
198.6 Secondary malignant neoplasm of ovary
218.0 Submucous leiomyoma of uterus
218.1 Intramural leiomyoma of uterus
218.2 Subserous leiomyoma of uterus
218.9 Leiomyoma of uterus, unspecified
233.1 Carcinoma in situ of cervix uteri
614.4 Chronic or unspecified parametritis and pelvic cellulitis
614.9 Unspecified inflammatory disease of female pelvic organs and tissues
617.0 Endometriosis of uterus
618.00 Unspecified prolapse of vaginal walls
618.1 Uterine prolapse without mention of vaginal wall prolapse
618.3 Uterovaginal prolapse, complete
618.6 Vaginal enterocele, congenital or acquired
621.2 Hypertrophy of uterus
621.30 Endometrial hyperplasia, unspecified
621.6 Malposition of uterus
622.10 Dysplasia of cervix, unspecified
625.3 Dysmenorrhea
625.6 Stress incontinence, female
626.2 Excessive or frequent menstruation
626.6 Metrorrhagia
627.1 Postmenopausal bleeding

- 677** Late effect of complication of pregnancy, childbirth, and the puerperium
788.33 Mixed incontinence (male) (female)

CCI Edits

- 58260** 0071T⁰, 0072T⁰, 01962⁰, 01963⁰, 01969⁰, 36000¹, 36410¹, 37202¹, 50715¹, 51010⁰, 51040¹, 51701⁰, 51702⁰, 51703⁰, 56820⁰, 57106¹, 57180¹, 57268⁰, 57410⁰, 57420⁰, 57420⁰, 57452⁰, 57500⁰, 57522¹, 57530⁰, 57550¹, 57800⁰, 58100⁰, 58120¹, 58140⁰, 58145⁰, 58146⁰, 58280^{1M}, 58353¹, 58356⁰, 58545¹, 58546¹, 58550¹, 58552¹, 58554¹, 58558¹, 58660¹, 58662¹, 58720⁰, 62318¹, 62319¹, 64415¹, 64416¹, 64417¹, 64430¹, 64435¹, 64450¹, 64470¹, 64475¹, 69990⁰, 90760¹, 90765¹, 90772¹, 90774¹, 90775¹, P9612⁰
58290 0071T⁰, 0072T⁰, 01962⁰, 01963⁰, 01969⁰, 36000¹, 36410¹, 37202¹, 50715¹, 51010⁰, 51040¹, 51701⁰, 51702⁰, 51703⁰, 57106¹, 57180¹, 57268⁰, 57410⁰, 57420⁰, 57452⁰, 57500⁰, 57522¹, 57530⁰, 57550¹, 57800⁰, 58100⁰, 58120¹, 58140⁰, 58145⁰, 58260¹, 58280^{1M}, 58353¹, 58356⁰, 58541^{1M}, 58542^{1M}, 58543^{1M}, 58544^{1M}, 58550⁰, 58552¹, 58553¹, 58554¹, 58558¹, 58570^{1M}, 58571^{1M}, 58572^{1M}, 58660¹, 58662¹, 58720⁰, 62318¹, 62319¹, 64415¹, 64417¹, 64430¹, 64435¹, 64450¹, 64470¹, 64475¹, 69990⁰, 90760¹, 90765¹, 90772¹, 90774¹, 90775¹, P9612⁰

Medicare Coverage, RVU and Modifier Data

	Fac	N-Fac	Global	Mod	Mod	Mod	
	Status	RVU	RVU	Days	-50	-51	-80
58260	A	22.05	22.05	90	0	2	2
58290	A	31.16	31.16	10	0	2	2

Medicare Manuals: NCD 1, 230.3

58262, 58291

CPT® Codes

- 58262** Vaginal hysterectomy, for uterus 250 g or less; with removal of tube(s) and/or ovarie(s)
58291 Vaginal hysterectomy, for uterus greater than 250 g; with removal of tube(s) and/or ovarie(s)

CPT® Coding Tips

When performed in conjunction with vaginal vault suspension, pelvic floor reconstruction, slings, etc., the hysterectomy CPT code is typically coded first with the others secondary with the -51 modifier.

ICD-9-CM Codes

- 180.0** Malignant neoplasm of; endocervix
180.1 exocervix
181 placenta
182.0 corpus uteri, except isthmus
182.1 isthmus
183.0 ovary
183.8 other specified sites of uterine adnexa
198.6 Secondary malignant neoplasm of ovary
218.0 Submucous leiomyoma of uterus
218.1 Intramural leiomyoma of uterus
218.2 Subserous leiomyoma of uterus
233.1 Carcinoma in situ of cervix uteri
614.4 Chronic or unspecified parametritis and pelvic cellulitis
617.0 Endometriosis of uterus
618.00 Unspecified prolapse of vaginal walls
618.1 Uterine prolapse without mention of vaginal wall prolapse
618.3 Uterovaginal prolapse, complete
618.6 Vaginal enterocele, congenital or acquired

621.0	Polyp of corpus uteri
621.2	Hypertrophy of uterus
621.30	Endometrial hyperplasia, unspecified
621.6	Malposition of uterus
622.10	Dysplasia of cervix, unspecified
625.3	Dysmenorrhea
625.6	Stress incontinence, female
626.2	Excessive or frequent menstruation
627.1	Postmenopausal bleeding
677	Late effect of complication of pregnancy, childbirth, and the puerperium
788.33	Mixed incontinence (male) (female)
795.05	Cervical high risk human papillomavirus (HPV) DNA test positive
795.15	Vaginal high risk human papillomavirus (HPV) DNA test positive
796.75	Anal high risk human papillomavirus (HPV) DNA test positive

CCI Edits

58262 0071T⁰, 0072T⁰, 01962⁰, 01963⁰, 01969⁰, 36000¹, 36410¹, 37202¹, 49322¹, 50715¹, 51040¹, 51701⁰, 51702⁰, 51703⁰, 56820⁰, 57180¹, 57410⁰, 57420⁰, 57452⁰, 57500⁰, 57522¹, 57530⁰, 57550⁰, 57800⁰, 58100⁰, 58120¹, 58140⁰, 58145⁰, 58146⁰, 58260¹, 58290¹, 58353¹, 58356⁰, 58541^{1M}, 58545¹, 58546¹, 58550¹, 58552¹, 58553¹, 58554¹, 58558¹, 58570^{1M}, 58660¹, 58661¹, 58662¹, 58670¹, 58671¹, 58672¹, 58673¹, 58700⁰, 58720⁰, 58740⁰, 58800⁰, 58820¹, 58900⁰, 58925¹, 58940¹, 62318¹, 62319¹, 64415¹, 64416¹, 64417¹, 64430¹, 64435¹, 64450¹, 64470¹, 64475¹, 69990⁰, 90760¹, 90765¹, 90772¹, 90774¹, 90775¹, P9612⁰

58291 0071T⁰, 0072T⁰, 01962⁰, 01963⁰, 01969⁰, 36000¹, 36410¹, 37202¹, 49322¹, 50715¹, 51010⁰, 51040¹, 51701⁰, 51702⁰, 51703⁰, 57180¹, 57410⁰, 57420⁰, 57452⁰, 57500⁰, 57522¹, 57530⁰, 57550⁰, 57800⁰, 58100⁰, 58120¹, 58140⁰, 58145⁰, 58260¹, 58262¹, 58267¹, 58270¹, 58353¹, 58356⁰, 58541^{1M}, 58542^{1M}, 58543^{1M}, 58544^{1M}, 58550⁰, 58552¹, 58553¹, 58554¹, 58558¹, 58570^{1M}, 58571^{1M}, 58572^{1M}, 58660¹, 58661¹, 58662¹, 58670¹, 58671¹, 58672¹, 58673¹, 58700⁰, 58720⁰, 58740⁰, 58800⁰, 58820¹, 58900⁰, 58925¹, 58940¹, 62318¹, 62319¹, 64415¹, 64417¹, 64430¹, 64435¹, 64450¹, 64470¹, 64475¹, 69990⁰, 90760¹, 90765¹, 90772¹, 90774¹, 90775¹, P9612⁰

Medicare Coverage, RVU and Modifier Data

	Fac	N-Fac	Global	Mod	Mod	Mod	
	Status	RVU	RVU	Days	-50	-51	-80
58262	A	24.71	24.71	90	0	2	2
58291	A	33.85	33.85	90	0	2	2

Medicare Manuals: NCD 1, 230.3